

# Electric Gas Valve and Manual Reset Relay



P/N: 60-9197XXX-000; 60-9101735-000

Effective: December 2014  
K-87-023

## FEATURES

- **For Use in:**
  - **WHDR™ Commercial Cooking Fire Suppression Systems**
  - **IND™ Industrial Fire Suppression Systems**
- **For Use with Kidde XV™ Control System or KRS-50 Control Box**
- **UL Listed and ULC Listed**
- **FM Approved for IND Systems**

## DESCRIPTION

The Kidde Electric Gas Valve (Figure 1) is used on systems protecting gas-fueled equipment (e.g., appliances). The Kidde valve uses an electrically operated solenoid (120V, 60 Hz), which holds the valve in the open position. Upon system actuation or loss of electrical power, the valve closes, stopping the flow of gas to the equipment. All Electric Gas Valves must be installed horizontally with the solenoid up.

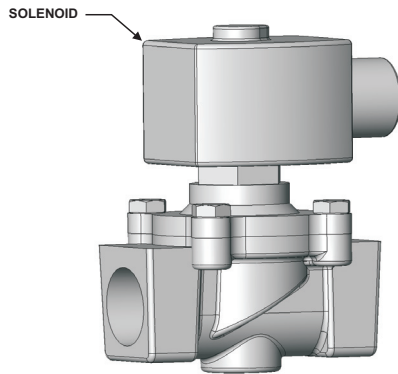


Figure 1. Electric Gas Valve

A Kidde Manual Reset Relay, P/N 60-9101735-000, is required with all Kidde Electric Gas Valves. The Manual Reset Relay (Figure 2) provides DPDT contacts rated for 10 amps at 120 Vac and prevents immediate reopening of the Electric Gas Valve.

The Electric Gas Valve and Manual Reset Relay must be specifically listed for use with the Kidde WHDR or IND suppression system.

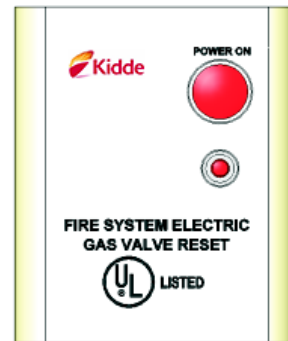


Figure 2. Manual Reset Relay, P/N 60-9101735-000

The Electric Gas Valve can be controlled via a Pressure Switch\* installed in the discharge piping (Figure 3 and Table 1) or via a microswitch from the XV Control System or KRS-50 Control Box\* (Figure 4).

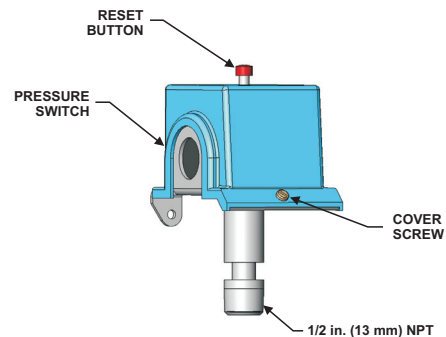


Figure 3. Pressure Switch, P/N 60-9197023-000

**Table 1: Pressure Switch Electric Specifications**

|             |                 |
|-------------|-----------------|
| 115/230 Vac | 15 Amps         |
| 28 Vdc      | 5 Amps          |
| 75 Vdc      | 1 Amp           |
| 125 Vdc     | 1/2 Amp         |
| 250 Vdc     | 1/4 Amp         |
| Yellow Wire | Common          |
| Blue Wire   | Normally Open   |
| Black Wire  | Normally Closed |

MICROSWITCH CONTACTS SHOWN WITH  
CONTROLLER IN SET POSITION

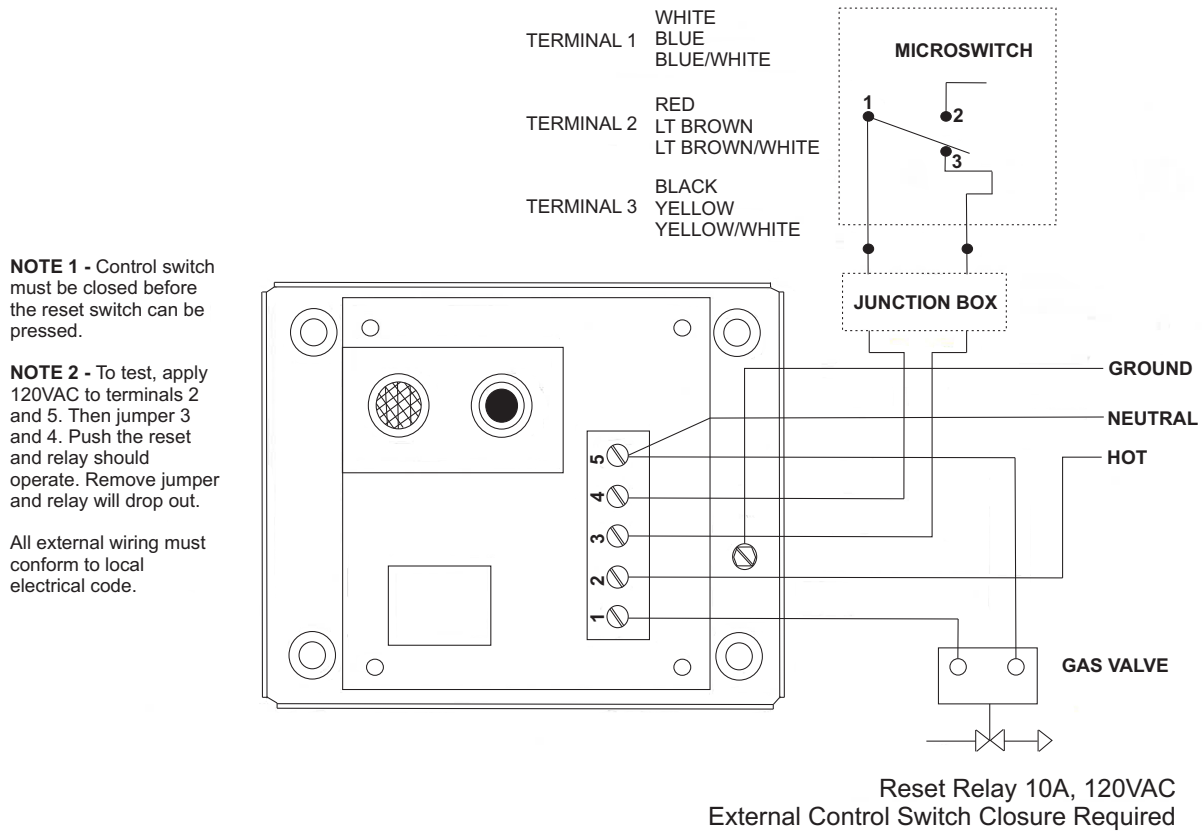


Figure 4. Manual Reset Relay Wiring for Microswitches

| Ordering Information         |                |  |                |
|------------------------------|----------------|--|----------------|
| Description                  | Part Number    | Description  | Part Number    |
| 1/2-in. Electric Gas Valve   | 60-9197017-000 | 3-in. Electric Gas Valve                           | 60-9197445-000 |
| 3/4-in. Electric Gas Valve   | 60-9197018-000 | Manual Reset Relay                                 | 60-9101735-000 |
| 1-in. Electric Gas Valve     | 60-9197019-000 | Microswitch, Quick Connect, Solid Leads (for XV)   | 87-120039-001  |
| 1-1/4 in. Electric Gas Valve | 60-9197020-000 | Microswitch, Quick Connect, Striped Leads (for XV) | 87-120039-501  |
| 1-1/2-in. Electric Gas Valve | 60-9197021-000 | Microswitch, Quick Connect, SPDT (for KRS-50)      | 60-9197227-000 |
| 2-in. Electric Gas Valve     | 60-9197022-000 | Microswitch, Quick Connect, Dual SPDT (for KRS-50) | 60-9197228-000 |
| 2-1/2-in. Electric Gas Valve | 60-9197444-000 | Pressure Switch*                                   | 60-9197023-000 |

\* WHDR Systems only

Kidde is a registered trademark of Kidde-Fenwal, Inc.  
WHDR, IND, and XV are trademarks of Kidde-Fenwal, Inc.

This literature is provided for informational purposes only. KIDDE-FENWAL, INC. assumes no responsibility for the product's suitability for a particular application. The product must be properly applied to work correctly.

If you need more information on this product, or if you have a particular question, contact KIDDE-FENWAL, INC., Ashland, MA 01721. Telephone: (508) 881-2000.

